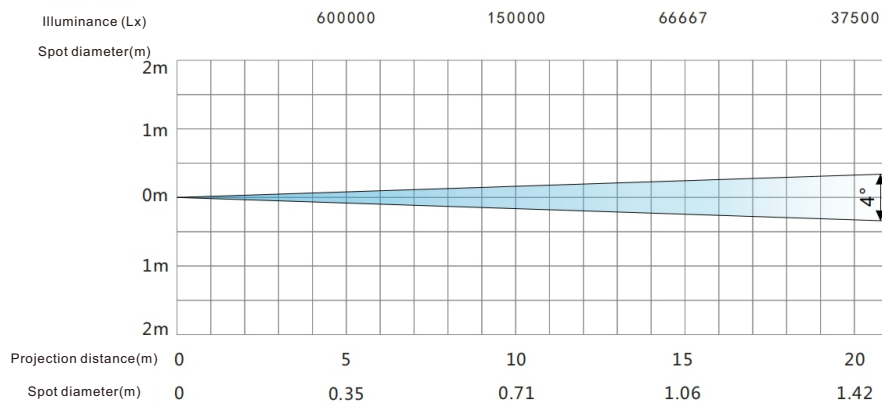
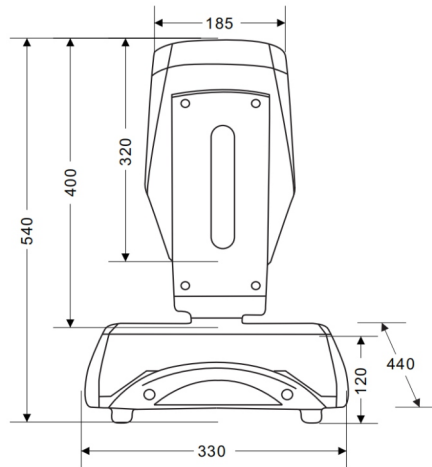




# Moving Head Beam Light

## TL-SL101B



### Feature:

- \* Optics: the optical lenses with high temperature resistance and strong light transmittance (3-layer coating film).
- \* Color panel: 14 color plate + 1 white light, bidirectional rainbow effect, adjustable speed, and arbitrary positioning function.
- \* Fixed pattern panel: 17 fixed pattern plate + 1 white light, pattern dithering, one-way flow effect, adjustable speed, and arbitrary positioning function.
- \* Prism: 16-sided rotating prism, the prism can be rotated in both directions, and the speed is adjustable.
- \* Strobe: double-chip strobe 0.5-14 times/sec, support synchronous, asynchronous, random stroboscopic mode, and adjustable speed.
- \* Atomization: 1 independent atomization effect with soft and natural light spot.
- \* Scan range: X-axis 540°/2.5 S, Y-axis 270°/1.5 S, accurate scanning and positioning.
- \* Display interface: a widescreen LCD interface in Chinese and English.
- \* Intelligent heat dissipation: adopt wind direction drainage and intelligent temperature monitoring technology; according to the temperature of different parts of the light, the cooling fans in different parts are automatically started to cool the light components down.

### Specifications:

Model	TL-SL101B
Input voltage	AC110V-240V 50/60Hz, 350W
Ballast	Electronic ballast
Light source	OSRAM 231W
Average lifespan	2000H
Color temperature	8500K
Beam angle	0~3.8°(parallel beam angle)
Control mode	DMX512 (ART-NET/RDM/DMX wireless, optional)
Channel	16 channels
Fixture material	High temperature resistant plastic + molded alloy material
Protection level	IP20
Fixture size (L×W×H)	409×310×498mm
Package size (L×W×H)	452×405×540mm
Gross weight	19kg
Net weight	16.5kg