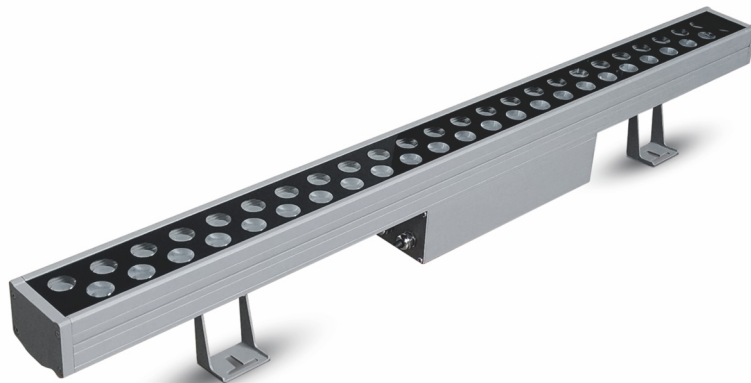




# LED Wall Washer

## TL-LH1701



### Description

The wall washer is suitable for panoramic floodlighting of internal and external walls such as government lighting projects, commercial places, stages, conference rooms, display lights, ancient buildings, cultural squares, overpasses, building exterior walls, architectural landmarks, etc. It is also applicable to landscape buildings, outdoor squares and so on.

### Features

- \*Original structural design, internal cavity heat dissipation, simple overall appearance, angular, exquisite and beautiful, structural waterproof design, waterproof grade IP65;
- \*6063 aluminum alloy fixture, double slider fastening bracket, surface outdoor grade electrostatic spraying, strong corrosion resistance, harsh outdoor environment adaptability;
- \*Equipped with imported Philips/OSRAM light source, it has excellent light and color performance, which can effectively improve the light output efficiency of the fixture. Anti-glare shading plate can be used;
- \*Monochrome/RGB three-in-one/RGBW four-in-one, DMX512 control system, automatic addressing. Simple wiring make light installation and maintenance more convenient and faster.

### Specifications

Model	TL-LH1701
Input voltage/power	AC220V/50Hz/72W
Number of LEDs/light sources	Philips 3030/72PCS
Beam angle	10×60°(15, 30, 45, 60° optional)
Color temperature	3000K (1900, 2100, 4000, 5700K optional)
Installation method	Fixed
IP rating	IP65
Product size (L×W×H)	1000×80×148mm
Net weight	5.7KG
Certification	CE/ROHS