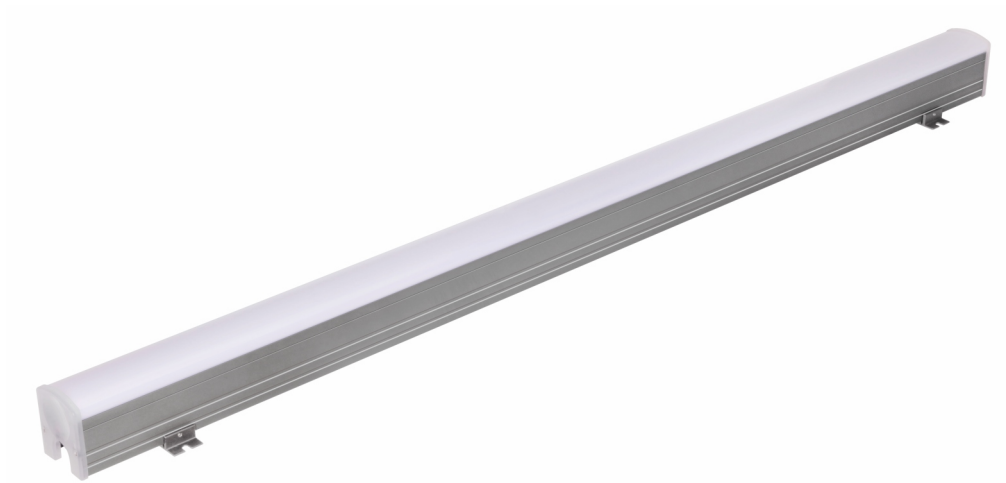




# LED Linear Light

## TL-LH2302



### Description

With the continuous development of urbanization, LED linear lights are used more and more in urban lighting projects. They are very practical and can be freely matched to highlight the outline of buildings, or to make digital screen effects.

### Features

- \* Unique structure, simple and beautiful appearance, waterproof design with full sealant potting, and protection level of IP65;
- \* 6063 aluminum alloy fixture, SUS304 stainless steel screw, multiple installation methods, surface electrostatic spraying paint, strong corrosion resistance, making it suitable for harsh outdoor environments;
- \* It has the excellent optical performance, and the external anti-UV PC cover can effectively improve the uniformity of light mixing effects;
- \* The integration of monochromatic/RGB/RGBW supports DMX512 control system; concise wiring makes the fixture installation and maintenance more convenient;
- \* Electronic constant current program design ensures more stable performance; the seamless structure design is adopted.

### Specifications

Model	TL-LH2302
Input voltage/power	DC24V/6W
Number of LED lamp bead/light source	OSRAM 2835/24PCS
Beam angle	120°
Color temperature	3000K (1900, 2100, 4000, 5700K optional)
Control method	/
Installation method	Fixed (fastener is optional)
IP level	IP65
Fixture size (L×W×H)	500×50×60mm
Net weight	0.5KG
Certificate	CE/ROHS